



City of Farmer City
105 S Main St.
Farmer City, IL 61842
(309) 928-3412

Subject: Request for Bids - Fencing and Installation of Dog Park

Dear Prospective Bidders,

The City of Farmer City is seeking proposals from qualified contractors for the fencing and installation of an 80x100 foot dog park, complete with two safety entry gates and two maintenance gates, all constructed with 4-foot high coated chain link fence.

Scope of Work:

1. **Fencing:** Installation of a 4-foot high coated chain link fence surrounding the designated area for the dog park, ensuring the safety and security of the dogs within the enclosure. (See Attachment A)
2. **Entry Gates:** Installation of double (2 separate) entry gates strategically positioned for convenient, and safe, access to the dog park area.
3. **Maintenance Gates:** Installation of two maintenance gates to facilitate easy entry for maintenance personnel while ensuring the security of the park.
4. **Compliance:** Ensuring that all fencing materials and installation methods comply with relevant safety and regulatory standards.
5. **Warranty:** Bidders must provide details regarding warranties on both materials and workmanship to guarantee the longevity and durability of the installed fencing.
6. **Coordination with concrete masonry work;** entry pad and drinking fountain to be installed within fenced entry area

Bidding Instructions:

1. **Deadline:** Bids must be submitted by March 22, 2024 at 10 a.m.
2. **Submission:** Please submit your bid electronically to Sue McLaughlin, City Manager, smclaughlin@cityoffarmercity.org, with the subject line: "Bid for Dog Park Fencing – City of Farmer City."

3. Content: Bids should include a detailed breakdown of costs, proposed timeline for completion, payment schedule, and any additional relevant information.
4. Contractors to pay Prevailing wage on this project.

Evaluation Criteria:

1. Cost: The total cost of the project will be a significant factor in the evaluation process.
2. Experience: Bidders' experience and expertise in similar projects will be considered.
3. Compliance: Compliance with safety and regulatory standards will be closely evaluated.
4. References: References from previous clients may be requested and will be considered during the evaluation.

Please note that the lowest or any bid will not necessarily be accepted, and the City of Farmer City reserves the right to reject any or all bids received.

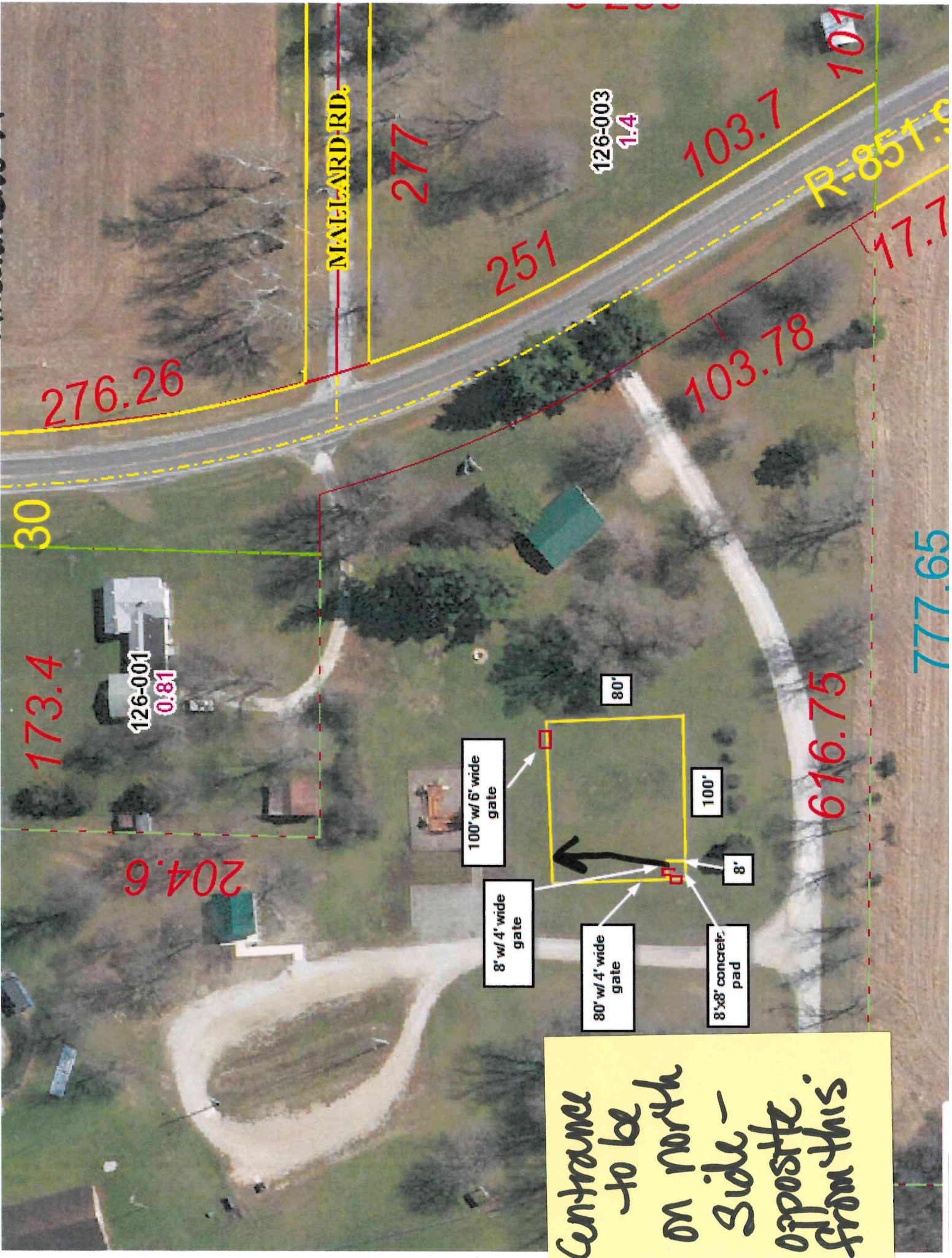
Should you have any questions or require further clarification, please contact Sue McLaughlin, City Manager, at (309) 928-3412 or smclaughlin@cityoffarmercity.org.

Thank you for your interest in this project. We look forward to receiving your proposal.

Sincerely,

Sue McLaughlin
City Manager
City of Farmer City

Attachment A



MAVELARD RD.

276.26

277

251

126-003
1.4

103.7

101

R-851.9

103.78

17.7

30

173.4

126-001
0.81

204.6

80'

100' w/ 6' wide gate

100'

8'

8' w/ 4' wide gate

80' w/ 4' wide gate

8'x8' concrete pad

616.75

777.65

Entrance to be on north side - opposite from this